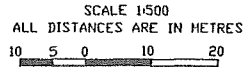


**SUBDIVISION PLAN OF LOT 1, SUBURBAN LOT 4, NEWCASTLE TOWNSITE,
SECTION 1, NANAIMO DISTRICT, PLAN 8478 EXCEPT THAT PART IN PLAN 19280**

PLAN EPP75648

B.C.G.S. 92G011



The intended plot size of this plan is 560m in width by 432 m in height (sheet size C) when plotted at a scale of 1:500.

77H5293
UTM Zone 10 coordinates
Datum: NAD83(CSRG)3.0.0.BC.LNVL
UTM northing: 5447628075
UTM easting: 429131010
Point combined factor: 0.9996542
Estimated Horizontal Positional Accuracy: 0.01m

LEGEND

- Standard Iron Post found
- Standard Iron Post set
- ⊙ Control Monument found
- ⊕ non-Standard Round Iron Post found

This plan contains on or more witness posts that are not set at the true corners.

Integrated Survey Area No. 20, Nanaimo,
NAD83 (CSRS),3.0.0.BC.LNVL.
Grid Bearings are derived from observations between geodetic control monuments 77H5290, 77H5293 and 77H5296 and are referred to the central meridian of UTM Zone 10.

The UTM coordinates and estimated horizontal positional accuracy are derived from HASCOT published coordinates and standard deviations for geodetic control monuments 77H5290, 77H5293 and 77H5296.

This plan shows horizontal ground-level distances unless otherwise specified. To compute grid distances, multiply ground-level distances by the average combined factor of 0.9996534 which has been derived from geodetic control monument 77H5296.

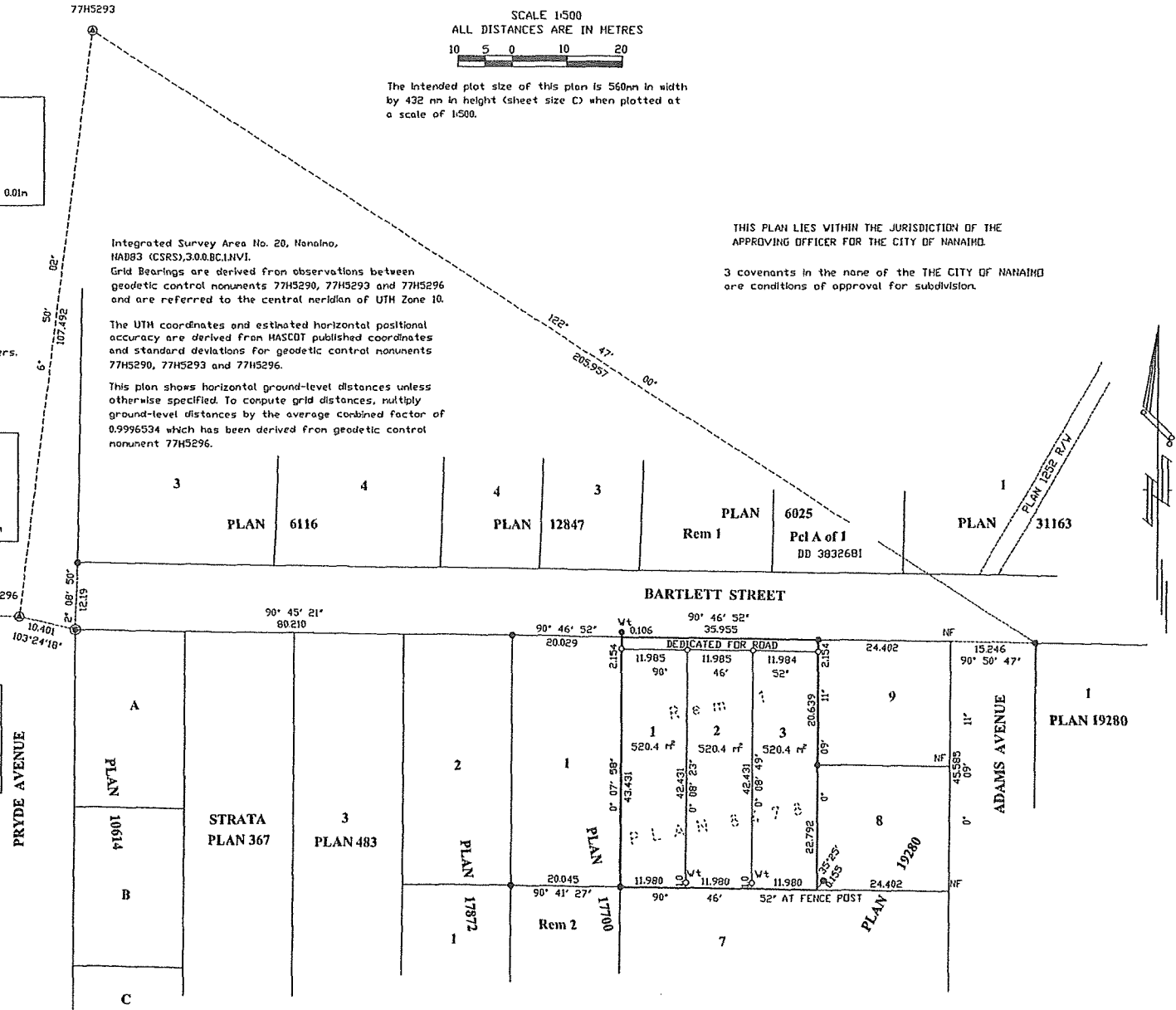
THIS PLAN LIES WITHIN THE JURISDICTION OF THE APPROVING OFFICER FOR THE CITY OF NANAIMO.

3 covenants in the name of the THE CITY OF NANAIMO are conditions of approval for subdivision.

77H5296
UTM Zone 10 coordinates
Datum: NAD83(CSRG)3.0.0.BC.LNVL
UTM northing: 5447521384
UTM easting: 429118224
Point combined factor: 0.9996534
Estimated Horizontal Positional Accuracy: 0.01m

77H5290 187.914 77H5296
91' 27' 36'
10.401
103°24'18"

77H5290
UTM Zone 10 coordinates
Datum: NAD83(CSRG)3.0.0.BC.LNVL
UTM northing: 5447526170
UTM easting: 429130436
Point combined factor: 0.9996541
Estimated Horizontal Positional Accuracy: 0.01m



T.G. Hoyt
B.C. Land Surveyor
2275 Godfrey Road
Nanaimo, B.C.
V9X 1E7
250-753-2921

THIS PLAN LIES WITHIN THE REGIONAL DISTRICT OF NANAIMO AND THE CITY OF NANAIMO.
THE FIELD SURVEY REPRESENTED BY THIS PLAN WAS COMPLETED ON THE 13th DAY OF APRIL, 2018.
THOMAS G. HOYT, ECLS 721